



Catalogue 2013

window scantlings 

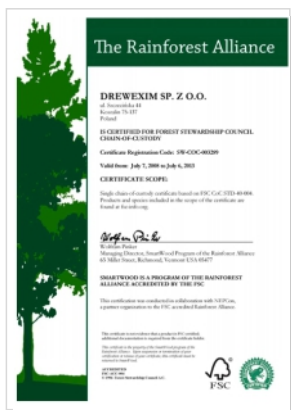
door scantlings 

floors, elevation, soffit 

About us

Since 1991 Drewexim has been manufacturing laminated window and door scantlings. Drewexim's products has been valued by many customers from various European and other countries. Very high quality and durability of our products has been approved by the ift Rosenheim institute. All Drewexim's products has been controlled by ift Rosenheim. We offer standard window and door scantlings, Scandinavian scantlings, passive scantlings, thermo wood scantlings and many more. We believe that all our products will meet various customer's wishes and demands.

Certificates



FSC[®] (Forest Stewardship Council[®]) - is an international organization that promotes responsible management of the forest resources. Ownership of FSC[®] certification is a confirmation that company is supplied with wood from well managed sources. FSC[®] certified forests represent the highest international standards of environmental protection and respect for local population. In 2008 Drewexim Sp z o.o. was granted FSC[®] Certification (license number FSC C012158).

More information at: www.fsc.com



ift Rosenheim certificate - it is an approval issued by the German Institute For Window Techniques in Rosenheim (IFT) for the laminated pine timber, window scantlings. This certificate is awarded to manufacturers whose technological process and durability of the products comply with the very strict ift Rosenheim norms. The certificate is valid for 3 years and during this time the manufacturer is being annually controlled.

More information at: www.ift-rosenheim.de

Standard window scantlings

Drewexim offers laminated window scantlings in the typical sections for manufacturing standard tilt & turn windows. However, this does not mean that we offer standard dimensions only. You can build the required dimensions of our scantlings to suit your manufacturing needs based on the available thicknesses of the layers: 21, 24, 30, and 40mm.



Name: Standard window scantlings 72x86
Thermal transmittance: $U=1,7 \text{ W/m}^2\text{K}$

Dimensions:

- thickness: 72mm
- width: 86mm
- thickness of the layer: 24mm

Wood species:

- finger-jointed pine (KKK)
- clear-face pine (DKD)
- other on request

Application:

- Euro68, IV68 window system
- tilt & turn windows
- balcony doors

Features:

- weight: 550 kg/m³,
- external layers with radial or half-radial grains
- all layers free from defects (knots, core, resin, cracks),
- finger-jointing every 210mm+ or 400mm+ on request,
- moisture content $13 \pm 2 \%$ (according to DIN EN 204),
- surface warp allowance 1mm per 1m,
- dimensions allowance 0,1mm,
- D4 class glue,
- other dimensions. i.e. 63x86,
- available thicknesses of the layers: 21, 24, 30, 40mm
- max length of finger-jointed beam is 6000mm, clear-face beam is 3000mm.

Order: minimum order quantity: 5m³



The mark of responsible forestry

Look for FSC® certified products



Scandinavian window scantlings

Due to increasing interest in Scandinavian markets and Scandinavian window systems Drewexim offers window scantlings prepared especially for manufacturing of outward opening and fully reversible Scandinavian windows. Combination of knowledge of our Scandinavian customers and and experience of Drewexim factory resulted in brand new product to make your window production easier and cost effective due to minimum wood waste.



Name: Scandinavian window scantlings 72 x 71

Thermal transmittance: $U=1,7 \text{ W/m}^2\text{K}$

Dimensions:

- thickness: 72mm
- width: 71mm
- thickness of the layer: 24mm

Wood species:

- finger-jointed pine (KKK)
- clear-face pine (DKD)
- other on request

Application:

- Scandinavian reversible windows
- Scandinavian outward opening windows
- Scandinavian balcony doors

Features:

- weight: 550 kg/m³
- external layers with radial or half-radial grains
- all layers free from defects (knots, core, resin, cracks)
- finger-jointing every 210mm+ or 400mm+ on request,
- moisture content $13 \pm 2 \%$ (according to DIN EN 204)
- surface warp allowance 1mm per 1m
- dimensions allowance 0,1mm
- D4 class glue
- other dimensions. i.e. 89x62, 72x62, 110x62,
- available thicknesses of the layers: 21, 24, 30, 40mm
- max length of finger-jointed beam is 6000mm, clear-face beam is 3000mm.

Order: minimum order quantity: 5m³



Look for FSC® certified products



Energy-efficient window scantlings

Drewexim introduces new window scantlings suitable for manufacturing of energy-efficient windows. It is approx. 20mm thicker than the standard scantlings which allows for manufacturing windows which achieve better thermal performance. Depending on your standard window profile whether it is 88 or 92mm thick we can produce the scantlings in the exact required dimensions.



Name: Energy-efficient window scantlings 92 x 94

Thermal transmittance: $U=1,4 \text{ W/m}^2\text{K}$

Dimensions:

- thickness: 92mm
- width: 94mm
- thickness of the layer: 30/32/30mm

Wood species:

- finger-jointed pine (KKK)
- clear-face pine (DKD)
- other on request

Application:

- system IV88, Euro88, IV92, Euro92
- tilt & turn energy-efficient windows
- energy-efficient balcony doors

Features:

- weight: 550 kg/m³
- external layers with radial or half-radial grains
- all layers free from defects (knots, core, resin, cracks)
- finger-jointing every 210mm+ or 400mm+ on request
- moisture content $13 \pm 2 \%$ (according to DIN EN 204)
- surface warp allowance 1mm per 1m
- dimensions allowance 0,1mm,
- D4 class glue
- available thicknesses of the layers: 21, 24, 30, 40mm
- max length of finger-jointed beam is 6000mm, clear-face beam is 3000mm.

Order: minimum order quantity: 5m³



The mark of responsible forestry

Look for FSC® certified products



Passive window scantlings

Drewexim introduces new window scantlings suitable for manufacturing of passive windows. Passive windows must achieve the overall thermal transmittance $U_w=0,8 \text{ W/m}^2\text{K}$ or less. It is approx. 20mm thicker than the standard scantlings and its internal layer is made of special type of hard polyurethane foam. This allows for manufacturing windows which achieve very good thermal performance. Depending on your standard window profile whether it is 88 or 92mm thick we can produce the scantlings in the exact required dimensions.



Name:	Passive window scantlings 92 x 94
	Thermal transmittance: $U=1,2 \text{ W/m}^2\text{K}$
Dimensions:	<ul style="list-style-type: none"> - thickness: 92mm - width: 94mm - thickness of the layers: 30/32/30mm
Wood species:	<ul style="list-style-type: none"> - finger-jointed pine (KKK) - clear-face pine (DKD) - other on request.
Application:	<ul style="list-style-type: none"> - system IV88, Euro88, IV92, Euro92, other - tilt & turn passive windows - passive balcony doors
Features:	<ul style="list-style-type: none"> - weight: 550 kg/m³ - external layers with radial or half-radial grains - all layers free from defects (knots, core, resin, cracks) - finger-jointing every 210mm+ or 400mm+ on request - moisture content $13 \pm 2 \%$ (according to DIN EN 204) - surface warp allowance 1mm per 1m - dimensions allowance 0,1mm - D4 class glue - available thicknesses of the layers: 21, 24, 30, 40mm - max length of finger-jointed beam is 6000mm, clear-face beam is 3000mm
Order:	minimum order quantity: 5m ³



Look for FSC® certified products

Thermo wood window scantlings

Drewexim offers a new interesting product - thermo wood. Thermo wood is created in the process of drying and then thermal modification of various wood species. Modification is a process of exposing the wood to very high temperature in a special chamber which influences the characteristic features of the wood and also its colour. The wood becomes darker and similar to some of the exotic wood species. Application of thermo wood in manufacturing of windows enhances its resistance against moisture absorption and durability. Thermo wood does not require any chemical preservatives. Drewexim offers thermo wood scantlings in two configurations: all layers made of thermo wood or just the external layer.



The mark of responsible forestry

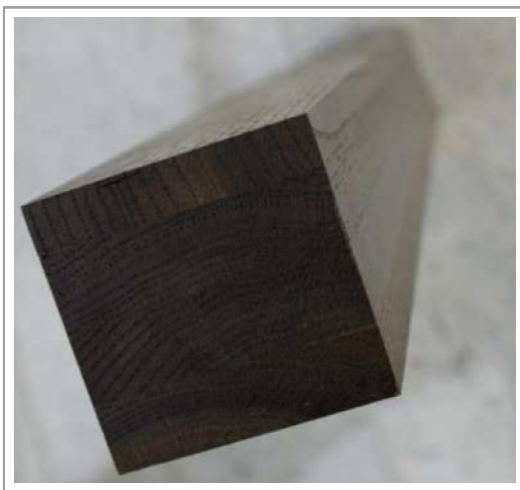
Look for FSC® certified products



Name:	Thermo wood window scantlings
Available thickness of the layers:	<ul style="list-style-type: none"> - 21mm - 24mm - 30mm - 40mm
Wood species:	<ul style="list-style-type: none"> - ash - beech - other on request
Application:	<ul style="list-style-type: none"> - tilt & turn windows - passive windows - Scandinavian windows - many other
Features:	<ul style="list-style-type: none"> - external layers with radial or half-radial grains - all layers free from defects (knots, core, resin, cracks) - finger-jointing every 210mm+ or 400mm+ on request, - D4 class glue - available thicknesses of the layers: 21, 24, 30, 40mm
Order:	minimum order quantity: 5m ³

Black oak window scantlings

Black oak is a very well known and highly required wood for hundreds of years mostly due to its unique colour. This wood is very rare and therefore very expensive which makes it practically impossible to be used in manufacturing of many products. Its technical features also make it difficult to work on. Therefore, Drewexim offers window scantlings made of black oak which is made in the process of environmentally friendly treatment. Drewexim black oak similar to the original has a beautiful dark colour with exposed grain and full colour across the whole wood. Its advantage over the original is much more attractive price level and much easier work with the wood. It is very stable and durable, produced out of heartwood only and it does not oxidizes. For our clients we produce black oak scantlings in any required dimension.



Name:	Black oak window scantlings
Thickness of the layers:	<ul style="list-style-type: none"> - 21mm - 24mm - 30mm - 40mm
Application:	<ul style="list-style-type: none"> - tilt & turn windows - passive windows - Scandinavian windows - many other.
Features:	<ul style="list-style-type: none"> - weight: 650-700 kg/m³, - external layers with radial or half-radial grains - all layers free from defects (knots, core, resin, cracks), - surface warp allowance 1mm per 1m - dimensions allowance 0,1mm - D4 class glue - available thicknesses of the layers: 21, 24, 30, 40m
Order:	minimum order quantity: 5m ³



The mark of responsible forestry

Look for FSC® certified products



Cottage style window scantlings

To meet the requirements of the customers in reference with individual and unique character of the products Drewexim introduces window scantlings for manufacturing cottage style windows. Cottage style products are especially required in country houses or traditional Scandinavian houses. Cottage style scantlings is made of wood which has knots but only the "healthy" ones and tangential wood grain is allowed. Our clients very often treat the window frames with just natural oil or wax which makes them look even more traditional.



The mark of responsible forestry

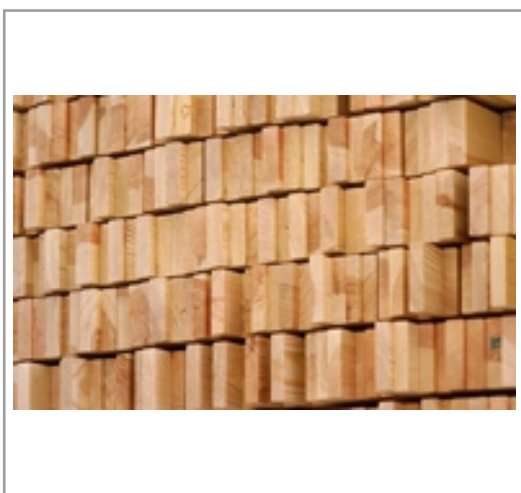
Look for FSC® certified products



Name:	Cottage style window scantlings
Thickness of the layers:	<ul style="list-style-type: none"> - 21mm - 24mm - 30mm - 40mm
Wood species:	<ul style="list-style-type: none"> - finger-jointed pine (KKK) - clear-face pine (DKD) - other on request
Application:	<ul style="list-style-type: none"> - tilt & turn windows - passive windows - Scandinavian windows - many other.
Features:	<ul style="list-style-type: none"> - weight: 550 kg/m³ - external layers with radial or half-radial grains - all layers free from defects (knots, core, resin, cracks) - finger-jointing every 210mm+ or 400mm+ on request - moisture content 13 ± 2 % (according to DIN EN 204) - surface warp allowance 1mm per 1m - dimensions allowance 0,1mm - D4 class glue - available thicknesses of the layers: 21, 24, 30, 40mm
Order:	minimum order quantity: 5m ³

Custom window scantlings

Apart from the very high quality of the products Drewexim specialises in offering the customers a full customization of the products to suit everybody's individual needs. We understand that every manufacturing plant has different requirements so we offer a wide choice of products and options to satisfy all special needs. We offer the possibility of combining various available standard thicknesses of layers to build the scantlings which you need. However, in case of bigger demand we can offer other non-standard thicknesses on request.



The mark of responsible forestry

Look for FSC® certified products



Name:	Custom window scantlings
Thickness of the layers:	<ul style="list-style-type: none"> - 21mm - 24mm - 30mm - 40mm - other on request
Wood species:	<ul style="list-style-type: none"> - finger-jointed pine - clear-face pine (DKD) - other on request
Features:	<ul style="list-style-type: none"> - external layers with radial or half-radial grains - all layers free from defects (knots, core, resin, cracks) - finger-jointing every 210mm+ or 400mm+ on request - moisture content $13 \pm 2\%$ (according to DIN EN 204) - surface warp allowance 1mm per 1m - dimensions allowance 0,1mm - D4 class glue.
Order:	minimum order quantity: 40m ³

Standard door scantlings

Drewexim offers laminated door scantlings in the typical sections for manufacturing standard entry doors. However, this does not mean that we offer standard dimensions only. You can build the required dimensions of our scantlings to suit your manufacturing needs based on the available thicknesses of the layers: 21, 24, 30, and 40mm.



The mark of responsible forestry

Look for FSC[®] certified products



Name:	Standard door scantlings
	Thermal transmittance: U=1,7 W/m ² K
Dimensions:	<ul style="list-style-type: none"> - thickness: 72mm - width: 145mm - thickness of the layer: 24mm
Wood species:	<ul style="list-style-type: none"> - finger-jointed pine (KKK) - clear-face pine (DKD) - other on request
Application:	<ul style="list-style-type: none"> - system Euro68, IV68 - entry doors
Features:	<ul style="list-style-type: none"> - weight: 550 kg/m³ - external layers with radial or half-radial grains - all layers free from defects (knots, core, resin, cracks) - finger-jointing every 210mm+ or 400mm+ on request - moisture content 13 ± 2 % (according to DIN EN 204) - surface warp allowance 1mm per 1m - dimensions allowance 0,1mm - D4 class glue - other dimensions. i.e. 72x120, 63x120, 63x145 - available thicknesses of the layers: 21, 24, 30, 40mm - max length of finger-jointed beam is 6000mm, clear-face beam is 3000mm
Order:	minimum order quantity: 5m ³

Reinforced door scantlings

Drewexim offers laminated door scantlings in the typical sections for manufacturing standard entry doors. However, this does not mean that we offer standard dimensions only. You can build the required dimensions of our scantlings to suit your manufacturing needs based on the available thicknesses of the layers: 21, 24, 30, and 40mm. Our door scantlings can be also be reinforced by the aluminium profile placed inside of it or by using plywood core. This minimizes the risk of warping and twisting especially of the long elements which are more and more often used for entry doors and lift & slide doors.



Name:	Reinforced door scantlings 72x145
Dimensions:	- thickness: 72mm - width: 145mm
Wood species:	- finger-jointed pine (KKK) - clear-face pine (DKD) - other on request
Application:	- system Euro68, IV68 - entry doors - lift & slide doors
Features:	- external layers with radial or half-radial grains - all layers free from defects (knots, core, resin, cracks), - finger-jointing every 210mm+ or 400mm+ on request - moisture content $13 \pm 2\%$ (according to DIN EN 204) - surface warp allowance 1mm per 1m - dimensions allowance 0,1mm - D4 class glue - other dimensions. i.e. 72x120, 63x120, 63x145, - available thicknesses of the layers: 21, 24, 30, 40mm - max length of finger-jointed beam is 6000mm, clear-face beam is 3000mm.
Order:	minimum order quantity: 5m ³



The mark of responsible forestry

Look for FSC® certified products



Energy-efficient door scantlings

Drewexim introduces new door scantlings suitable for manufacturing of energy-efficient doors. It is approx. 20mm thicker than the standard scantlings which allows for manufacturing doors which achieve better thermal performance. Depending on your standard door profile whether it is 88 or 92mm thick we can produce the scantlings in the exact required dimensions.



The mark of responsible forestry

Look for FSC® certified products



Name: Energy-efficient door scantlings 92x145

Thermal transmittance: $U=1,4 \text{ W/m}^2\text{K}$

Dimensions:

- thickness: 92mm
- width: 145mm
- thickness of the layer: 30/32/30mm

Wood species:

- finger-jointed pine (KKK)
- clear-face pine (DKD)
- other on request

Application:

- system IV88, Euro88, IV92, Euro92
- energy-efficient entry door

Features:

- weight: 550 kg/m³
- external layers with radial or half-radial grains
- all layers free from defects (knots, core, resin, cracks)
- finger-jointing every 210mm+ or 400mm+ on request
- moisture content $13 \pm 2 \%$ (according to DIN EN 204)
- surface warp allowance 1mm per 1m
- dimensions allowance 0,1mm
- D4 class glue
- other dimensions. i.e. 92x120
- available thicknesses of the layers: 21, 24, 30, 40mm
- max length of finger-jointed beam is 6000mm, clear-face beam is 3000mm.

Order: minimum 5m³

Passive door scantlings

Drewexim introduces new door scantlings suitable for manufacturing of passive doors. It is approx. 20mm thicker than the standard scantlings and its internal layer is made of special type of hard polyurethane foam. This allows for manufacturing wdoors which achieve very good thermal performace. Depending on your standard door profile wether it is 88 or 92mm thick we can produce the scantlings in the exact required dimensions.



Name: Passive door scantlings 92x145

Thermal transmittance: $U=1,2 \text{ W/m}^2\text{K}$

Dimensions:

- thickness: 92mm
- width: 145mm

Wood species:

- finger-jointed pine (KKK)
- clear-face pine (DKD)
- other on request

Application:

- system IV88, Euro88, IV92, Euro92
- passive entry doors

Features:

- external layers with radial or half-radial grains
- all layers free from defects (knots, core, resin, cracks)
- finger-jointing every 210mm+ or 400mm+ on request
- moisture content $13 \pm 2 \%$ (according to DIN EN 204)
- surface warp allowance 1mm per 1m
- dimensions allowance 0,1mm
- D4 class glue
- other dimensions. i.e. 92x120
- available thicknesses of the layers: 21, 24, 30, 40mm
- max length of finger-jointed beam is 6000mm, clear-face beam is 3000mm.

Order: minimum order quantity: 5m³



The mark of responsible forestry



Look for FSC® certified products

Floorboards

Drewexim offers pine floorboards. We produce the floorboards with the highest quality pine wood. The boards are made of solid wood without any veneers which enhances both the aesthetics and durability. Our floorboards are easy to finish and maintain. You can use painting or oiling.

Name:	Floorboards
Dimensions:	- width: 150mm - thickness: 25mm - length: 6000mm
Wood available:	- finger-jointed pine with knots - finger-jointed pine without knots
Features:	- weight: 550 kg/m ³ - finger jointing - moisture content 13 ± 2 % - D3 class glue

Soffit boards

Drewexim offers pine soffit boards available in 2 shapes and several quality options. Boards are finger-jointed in length. They are easy to install and maintenance. You can finish them with paint or oil.

Name:	Soffit boards
Dimensions:	<ul style="list-style-type: none"> - width: 75, 85, 105 mm - thickness: 20 mm - length: 6000 mm
Wood available:	<ul style="list-style-type: none"> - finger-jointed pine with knots - finger-jointed pine without knots - finger-jointed pine with resin - finger-jointed pine without resin
Shapes:	<ul style="list-style-type: none"> - flush - tongued
Features:	<ul style="list-style-type: none"> - weight: 550 kg/m³ - various grains - finger jointing - moisture content 13 ± 2 % - D3 class glue.

Wooden cladding

Exterior wooden cladding is one of the most modern and impressive materials for exterior walls. Because of large choice of designs and dimensions there is a lot ways to configure the cladding. They are suitable for all types of walls, corners and angles. Used for both renovation and new build. They improve the aesthetics of the building and give additional protection from heat loss.

Name:	Wooden cladding
Dimensions:	<ul style="list-style-type: none"> - thickness: 15/24 mm - height: 70-145 mm - length: 3000 mm
Wood species:	<ul style="list-style-type: none"> - pine - meranti
Colour finish:	<ul style="list-style-type: none"> - oiled - stained - painted





Headquarters

Drewexim Sp. z o.o.
Szczecińska 44
75-137 Koszalin
tel +48 94 341 00 65
fax +48 94 342 32 35

office@drewexim.com
www.drewexim.pl

Factory

Nowe Bielice 35A
76-039 Biesiekierz